

# PAST PERFORMANCE

(as of 01/01/2023)



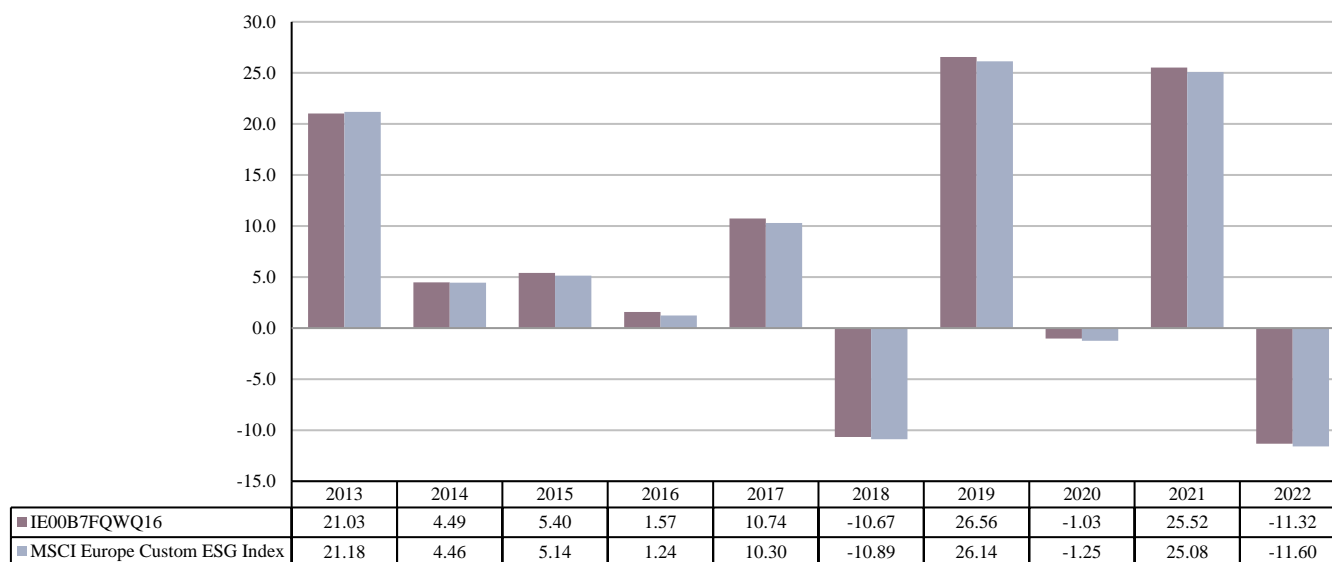
Past performance is not a reliable indicator of future performance. Markets could develop very differently in the future. It can help you to assess how the fund has been managed in the past.

## Northern Trust UCITS Common Contractual Fund - Northern Trust Europe Custom ESG Equity Index Fund (the "Fund") - Unit Class B EUR Accumulating ("Unit Class")

### PRODUCT

<b>Product:</b>	Northern Trust UCITS Common Contractual Fund - Northern Trust Europe Custom ESG Equity Index Fund (the "Fund") - Unit Class B EUR Accumulating ("Unit Class")
<b>Manufacturer name:</b>	Northern Trust Fund Managers (Ireland) Limited
<b>ISIN:</b>	IE00B7FQWQ16
<b>Unit Class Launch Date:</b>	24/10/2012
<b>Unit Class Currency:</b>	EUR

This chart shows the fund's performance as the percentage loss or gain per year over the last 10 years against its benchmark. It can help you to assess how the fund has been managed in the past and compare it to its benchmark.



Performance is shown after deduction of ongoing charges. Any entry and exit charges are excluded from the calculation.