

# PAST PERFORMANCE

(as of 01/01/2023)



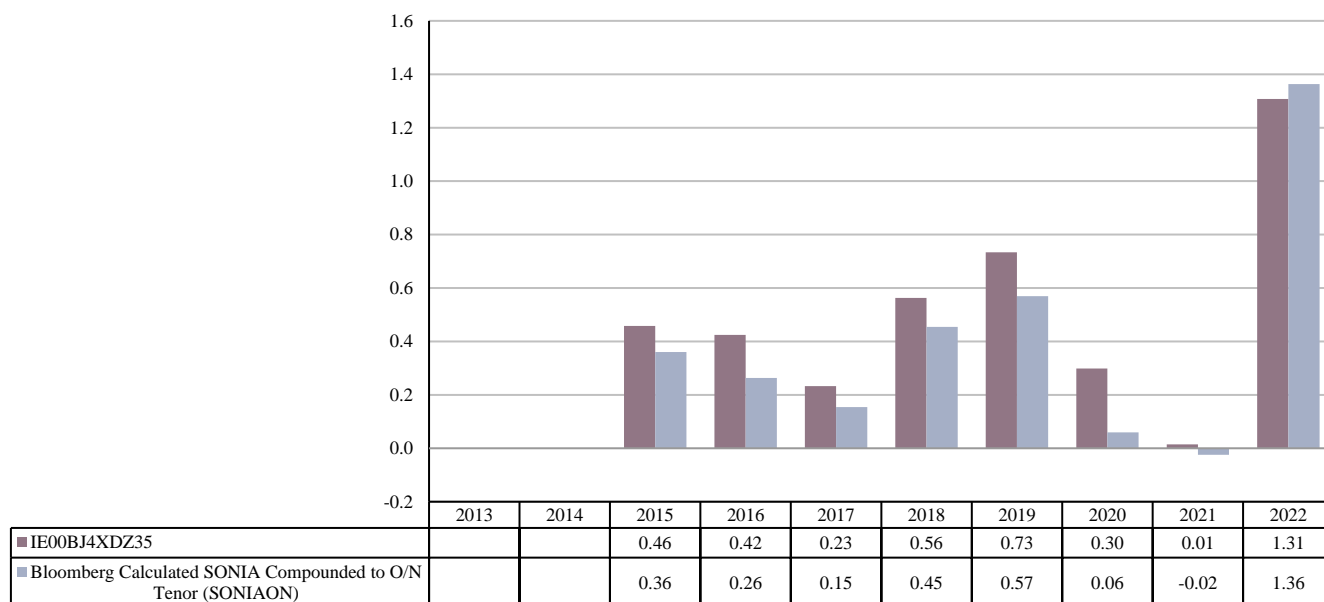
Past performance is not a reliable indicator of future performance. Markets could develop very differently in the future. It can help you to assess how the fund has been managed in the past.

## Northern Trust Global Funds PLC - The Sterling Fund (the "Fund") - Share Class E GBP Distributing (the "Share Class")

### PRODUCT

<b>Product:</b>	Northern Trust Global Funds PLC - The Sterling Fund (the "Fund") - Share Class E GBP Distributing (the "Share Class")
<b>Manufacturer name:</b>	Northern Trust Fund Managers (Ireland) Limited
<b>ISIN:</b>	IE00BJ4XDZ35
<b>Share Class Launch Date:</b>	03/03/2014
<b>Share Class Currency:</b>	GBP

This chart shows the fund's performance as the percentage loss or gain per year over the last 8 years against its benchmark. It can help you to assess how the fund has been managed in the past and compare it to its benchmark.



The reference benchmark up to 31st July, 2021 was 7 Day London Interbank Bid Rate (LIBID). Past performance for the years up to and including 2020 is presented against the 7 Day London Interbank Bid Rate (LIBID) and was achieved in circumstances that no longer apply. Performance is shown after deduction of ongoing charges. Any entry and exit charges are excluded from the calculation.