

PAST PERFORMANCE

(as of 01/01/2023)



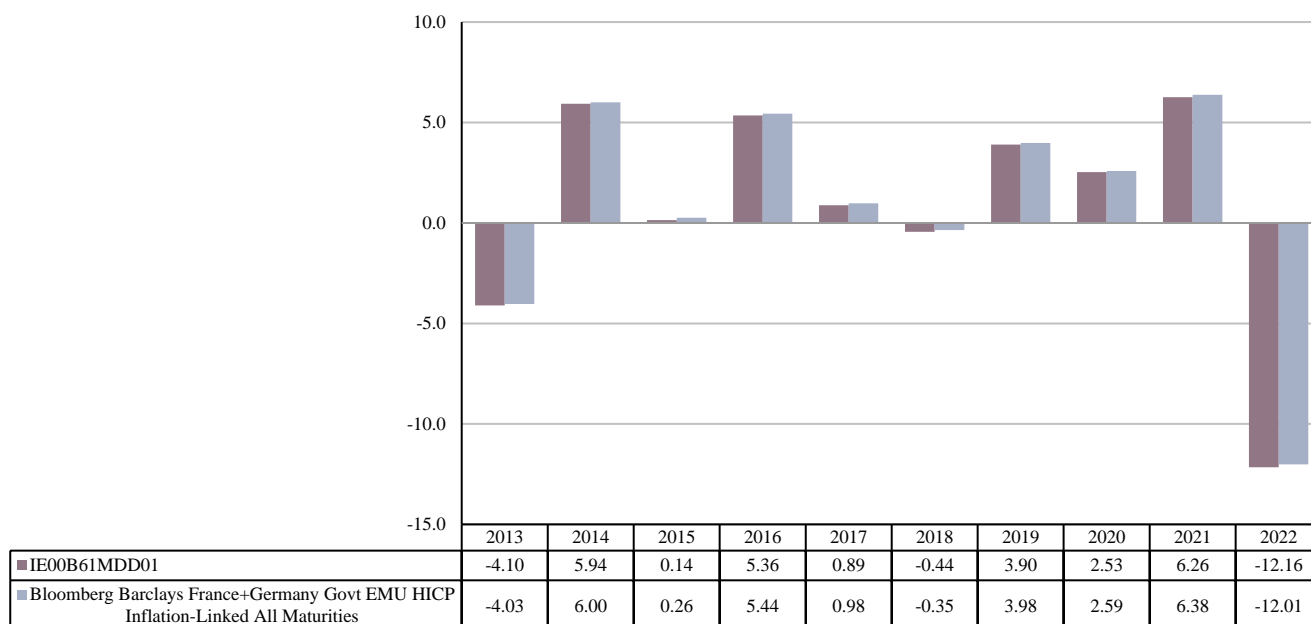
Past performance is not a reliable indicator of future performance. Markets could develop very differently in the future. It can help you to assess how the fund has been managed in the past.

Northern Trust Investment Funds plc - The NT Euro Government Inflation Linked Index Fund - Share Class C EUR Accumulating (the "Share Class")

PRODUCT

Product:	Northern Trust Investment Funds plc - The NT Euro Government Inflation Linked Index Fund - Share Class C EUR Accumulating (the "Share Class")
Manufacturer name:	Northern Trust Fund Managers (Ireland) Limited
ISIN:	IE00B61MDD01
Share Class Launch Date:	01/07/2009
Share Class Currency:	EUR

This chart shows the fund's performance as the percentage loss or gain per year over the last 10 years against its benchmark. It can help you to assess how the fund has been managed in the past and compare it to its benchmark.



The reference benchmark up to 30th June 2014 was Markit iBoxx EUR Sovereigns EUR Inflation-Linked ex-Italy ex-Greece Index. Past performance for the years up to and including 2013 is presented against the Markit iBoxx EUR Sovereigns EUR Inflation-Linked ex-Italy ex-Greece Index and was achieved in circumstances that no longer apply.

Performance is shown after deduction of ongoing charges. Any entry and exit charges are excluded from the calculation.