

# PAST PERFORMANCE

(as of 01/01/2023)



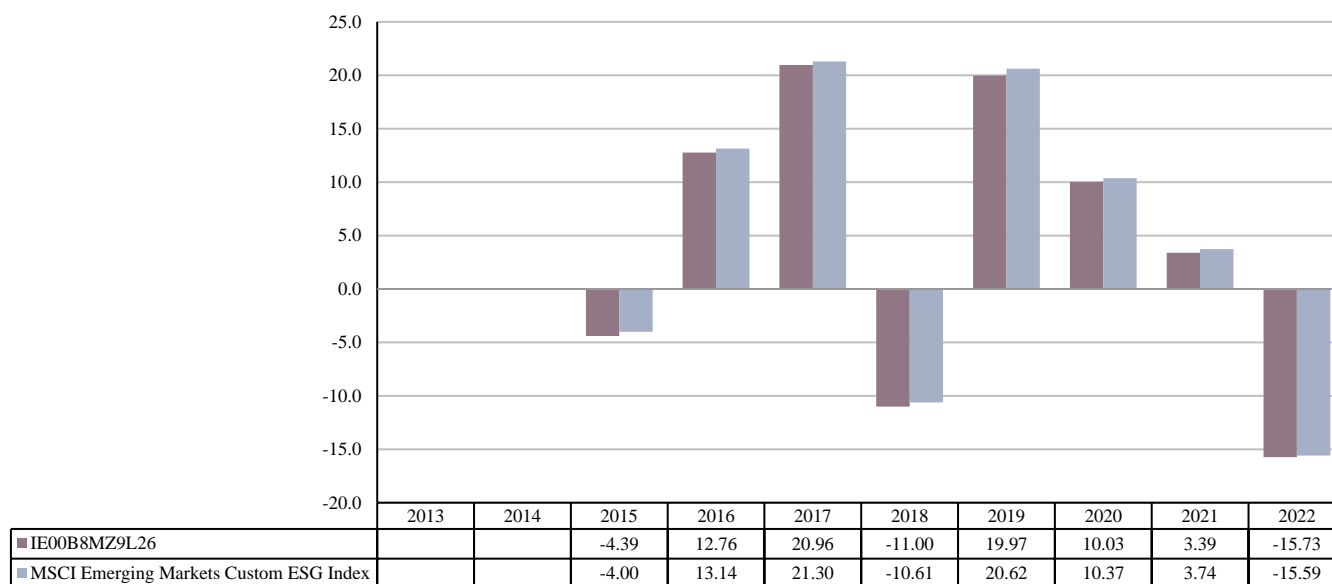
Past performance is not a reliable indicator of future performance. Markets could develop very differently in the future. It can help you to assess how the fund has been managed in the past.

## Northern Trust Investment Funds plc - The NT Emerging Markets Custom ESG Equity Index Fund (the "Fund") - Share Class B EUR Accumulating (the "Share Class")

### PRODUCT

|                                 |  |
|---------------------------------|--|
| <b>Product:</b>                 | Northern Trust Investment Funds plc - The NT Emerging Markets Custom ESG Equity Index Fund (the "Fund") - Share Class B EUR Accumulating (the "Share Class") |
| <b>Manufacturer name:</b>       | Northern Trust Fund Managers (Ireland) Limited   |
| <b>ISIN:</b>                    | IE00B8MZ9L26   |
| <b>Share Class Launch Date:</b> | 23/06/2014   |
| <b>Share Class Currency:</b>    | EUR  |

This chart shows the fund's performance as the percentage loss or gain per year over the last 8 years against its benchmark. It can help you to assess how the fund has been managed in the past and compare it to its benchmark.



Performance is shown after deduction of ongoing charges. Any entry and exit charges are excluded from the calculation.