

PAST PERFORMANCE

(as of 01/01/2023)



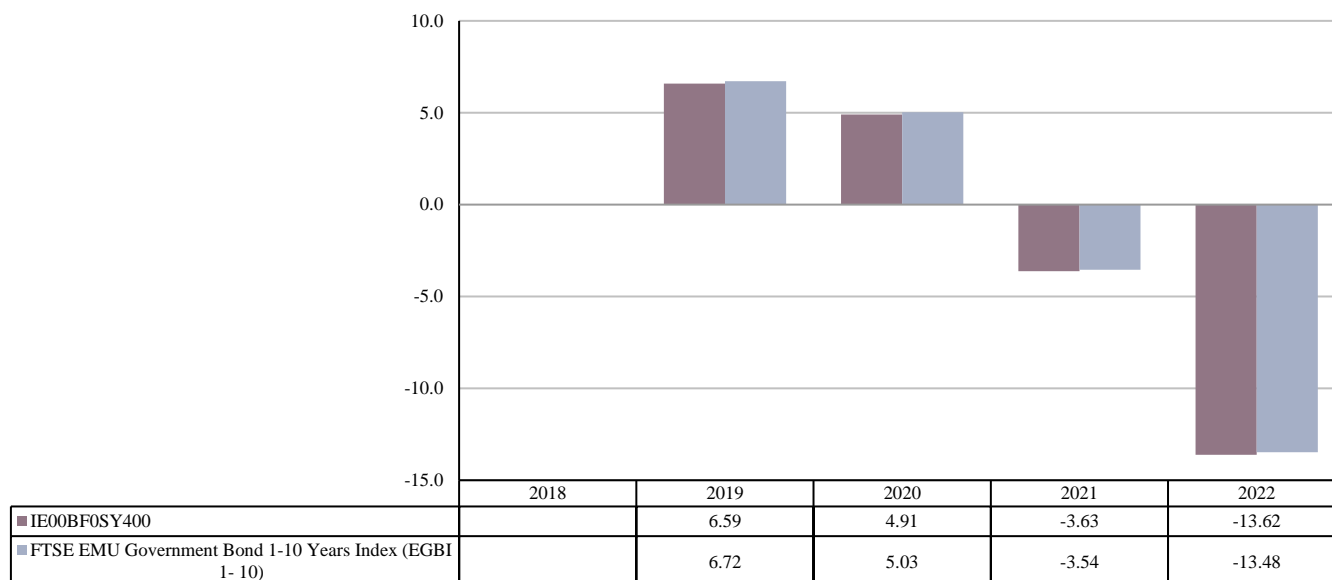
Past performance is not a reliable indicator of future performance. Markets could develop very differently in the future. It can help you to assess how the fund has been managed in the past.

Northern Trust Investment Funds plc - The NT Euro Government Bond Index Fund - Share Class C EUR Accumulating (the "Share Class")

PRODUCT

Product:	Northern Trust Investment Funds plc - The NT Euro Government Bond Index Fund - Share Class C EUR Accumulating (the "Share Class")
Manufacturer name:	Northern Trust Fund Managers (Ireland) Limited
ISIN:	IE00BF0SY400
Share Class Launch Date:	22/02/2018
Share Class Currency:	EUR

This chart shows the fund's performance as the percentage loss or gain per year over the last 4 years against its benchmark. It can help you to assess how the fund has been managed in the past and compare it to its benchmark.



The reference benchmark up to 31st March 2022 was FTSE EMU Government Bond Index (EGBI). Past performance for the years up to and including 2021 is presented against the FTSE EMU Government Bond Index (EGBI) and was achieved in circumstances that no longer apply. Performance is shown after deduction of ongoing charges. Any entry and exit charges are excluded from the calculation.