



NORTHERN
TRUST

Asset Servicing Solutions

INVESTMENT OPERATIONS OUTSOURCING

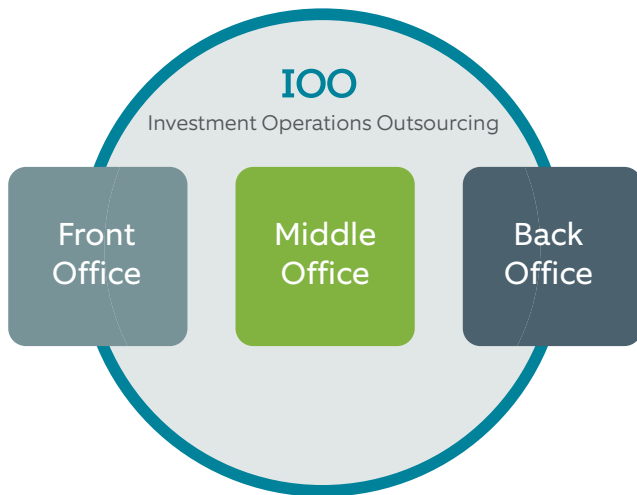
As investment strategies, regulations and technologies grow more complex, so does the need for efficient investment operations. Work with a provider who understands the changing demands for data governance, risk management, cost control and business growth.

SERVING YOUR EVOLVING NEEDS

Mounting competition has you focused on growing your distribution channels and product offering. Efficient operations are critical, but challenges continue to rise. Northern Trust's investment operations outsourcing provides the expertise, technology and oversight you need to improve efficiency, control costs and manage operational risk.

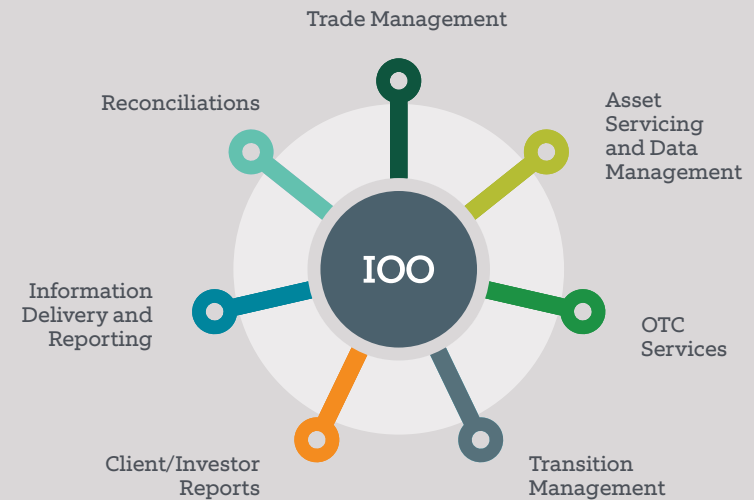
Full middle-office and component outsourcing solutions for a complex range of products, markets and asset types

- Global equities
- Global fixed income
- OTC and listed derivatives
- FX
- Bank loans
- Repo



SUPPORT ACROSS THE INVESTMENT LIFECYCLE

Outsource your entire middle office or just the components you need. Northern Trust's investment operations outsourcing services are tailored to asset managers and never off-the-shelf.



24/7 ACCESS

Around-the-clock access to global experts, products and services

SINGLE-PORTAL

One centralized web application, Northern Trust Passport®, for aggregating, managing, reporting and integrating data across performance, risk, analytics and financial information

TAILORED SERVICES

Flexible, customized services backed by local market support and advanced technology

SERVICES FOR ALL YOUR POST-TRADE NEEDS

Managing cost, maintaining technology and controlling data are just some of the challenges you face today. Northern Trust can help reduce operational distractions to keep you focused on the core activities you do best.

CORE IOO SERVICES

- Transaction capture and management
- Asset servicing and data management
- OTC lifecycle management
- Bank loan lifecycle management
- Market and front-office reconciliations
- Investment book of record
- Data delivery
- Client servicing

VALUE-ADD IOO SERVICES

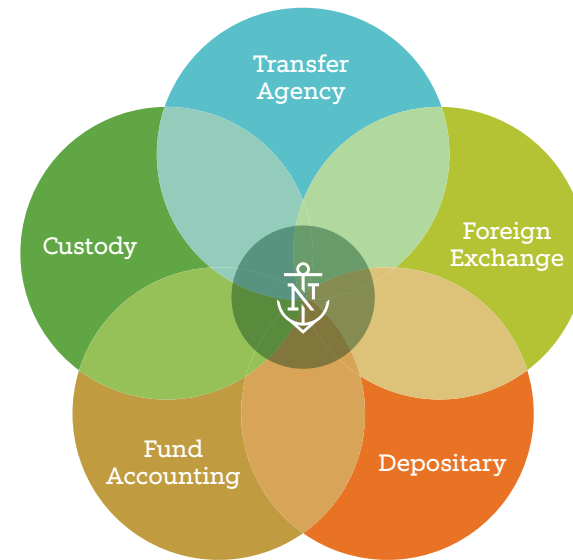
- Collateral management
- Alternative investments lifecycle management
- White-labeled client reporting and fee billing
- Daily performance attribution
- Risk analytics
- Total market value reconciliations
- EMIR and MiFID II reporting support
- FX services

Plan, monitor, measure and refine your outsourcing program with exceptional service from a provider who understands the complexities and demands you face.

SOLUTIONS THAT KEEP PACE WITH YOUR BUSINESS

Manage operational risk, improve speed to market and increase your ability to scale. Get the best of our practices, technology and processes to help you across a suite of back- and middle-office solutions.

IOO is one of multiple Northern Trust services available to support your workflow.



Maximize efficiency with additional services in fund accounting, depository, regulatory reporting and more.

GLOBAL ACCESS ANYTIME, ANYWHERE

Wherever you are, we're there too. Northern Trust's global, pass-the-book operating model means your portfolio information is seamlessly transferred across regions, time zones, custodians and third parties. Combined with a single application for aggregating data, analyzing risk and performance, valuing assets and managing reporting, you get a consistent experience that helps you balance risk, quality and cost.



AMERICAS

NORTH AMERICA
SOUTH AMERICA
CARIBBEAN

EMEA

EUROPE
MIDDLE EAST
AFRICA

APAC

ASIA AND
PACIFIC

MAKE FASTER INVESTMENT DECISIONS

Your business and investments are global. Ours are, too. Northern Trust's single operating model enables faster processing, swifter resolution and higher-quality data to help you make quick investment decisions and access new market opportunities.

GLOBAL SOLUTIONS FOR YOUR GLOBAL BUSINESS

Get live, 24-hour support across complex investment strategies and products through our servicing hubs around the world.

Manage Regulatory Demands

Comprehensive data aggregation services integrated with performance, risk and regulatory capabilities help you keep pace with regulations and operational demands.

Launch New Products and Strategies

Support across all asset classes helps you increase speed to market, grow your product offering and expand your business.

Control Costs

Manage and control costs with a flexible operating model.

A global operating model and an integrated web application help you keep pace with today's 24/7 investment environment.

- Increased operational efficiency
- Access to the systems and data you need, when you need it
- Dedicated client servicing that supports your growth goals

THE DATA YOU NEED, AT YOUR FINGERTIPS

Passport provides on-demand portfolio information, easily understood accounting information and accessible transaction data. A highly customizable portal, Passport helps you meet your data needs by focusing on visualization, portability and automation.

VISUALIZATION

- Interactive dashboards to customize portfolio views
- Dynamic online query tools with drill-down capabilities
- Seamless integration of analytical, portfolio, market and risk data

PORTABILITY

- Comprehensive reporting with flexible scheduling and distribution capabilities
- Secure integration with Excel® for customizable reports and presentations

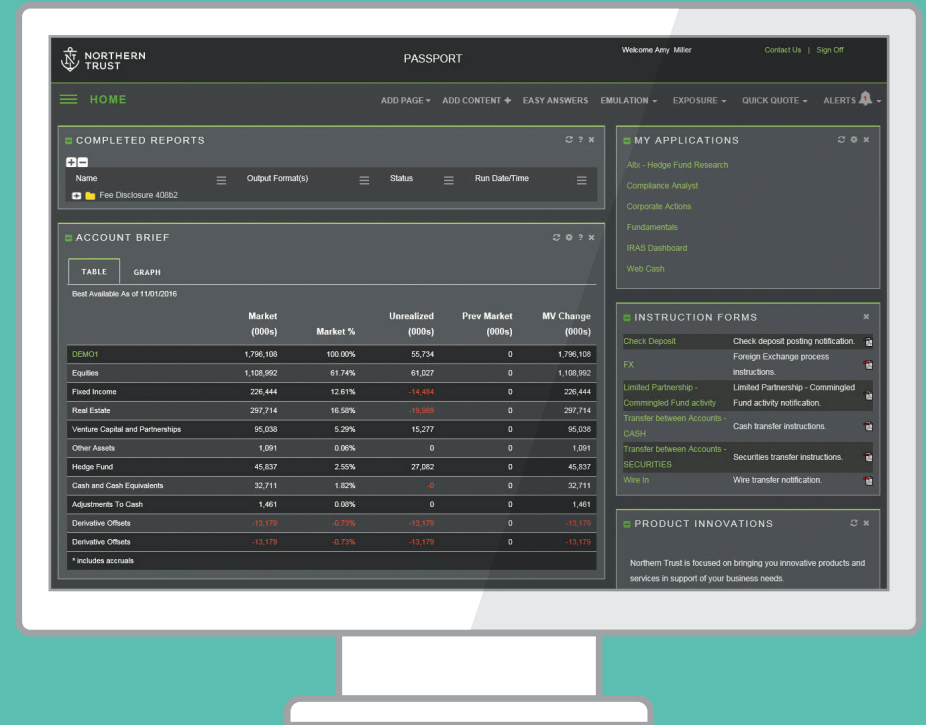
AUTOMATION

- Straight-through processing of cash and securities trades with a comprehensive audit trail
- Advanced query generation with scheduling and distribution capabilities supporting various applications and formats

Leverage our innovative technology and advanced enterprise IT architecture amid changing market practices and regulatory demands.

YOUR PORTFOLIO AT A GLANCE

Northern Trust Passport® gives you access to all your portfolio data in one easy-to-use application. Powerful analytical tools allow you to easily identify and integrate the precise data you need to make insightful decisions.



FOCUS ON GROWING YOUR BUSINESS

Whether you want to outsource all investment operations or just specific components, Northern Trust has you covered.

Find us online at northerntrust.com or call and talk to someone who can help you.

Global inquiries: +1.312.630.0779

United States inquiries: +1.866.876.9944

© 2019 Northern Trust Corporation. Head Office: 50 South La Salle Street, Chicago, Illinois 60603 U.S.A. Incorporated with limited liability in the U.S. Products and services provided by subsidiaries of Northern Trust Corporation may vary in different markets and are offered in accordance with local regulation.

This material is directed to professional clients only and is not intended for retail clients. For Asia-Pacific markets, it is directed to expert, institutional, professional and wholesale investors only and should not be relied upon by retail clients or investors.

For legal and regulatory information about our offices and legal entities, visit northerntrust.com/disclosures. The following information is provided to comply with local disclosure requirements: The Northern Trust Company, London Branch. Northern Trust Global Investments Limited. Northern Trust Securities LLP. Northern Trust Global Services SE, 6 rue Lou Hemmer, L-1748 Senningerberg, Grand-Duché de Luxembourg RCS B232281; Northern Trust Global Services SE UK Branch, 50 Bank Street, London E14 5NT; Northern Trust Global Services SE Sweden Bankfilial, Ingmar Bergmans gata 4, 1st Floor, 114 34 Stockholm, Sweden; Northern Trust Global Services SE, Abu Dhabi Branch, registration Number 000000519 licenced by ADGM under FSRA # 160018. The Northern Trust Company of Saudi Arabia - a Saudi closed joint stock company - Capital SAR 52 million. Licensed by the Capital Market Authority - License No. 12163-26 -C.R: 1010366439. Northern Trust Luxembourg Management Company S.A., 6 rue Lou Hemmer, L-1748 Senningerberg, Grand-Duché de Luxembourg, *Société anonyme* RCS B99167. Northern Trust (Guernsey) Limited (2651)/Northern Trust Fiduciary Services (Guernsey) Limited (29806)/Northern Trust International Fund Administration Services (Guernsey) Limited (15532) Registered Office: Trafalgar Court Les Banques, St Peter Port, Guernsey GY1 3DA.

